



# HMS Swordfish (N61)

## 1. Details

### General

Nationality: British  
 Purpose: War  
 Type: Submarine  
 Subtype/class: S class (group 1) submarine (br.)  
 Propulsion: Diesel and batteries  
 Date built: 1931  
 Status: Live ++

### Details

Tonnage: 935 disp (subm)  
 Dimensions: 61.6 x 7.3 x 3.2 m  
 Material: Steel  
 Engine: 2 x diesel engines, 2 x electric motors, dual shaft  
 Armament: 12 torpedoes, 6 T.T. 21"/533mm (6 fwd, 0 aft), 1 x 3"/76mm deck gun, 1 x .303 cal A.A.  
 Speed: 13.75 knots

### About the loss

Cause lost: Mine  
 Date lost: 07/11/1940  
 Casualties: † max.41 rank: 674

### About people

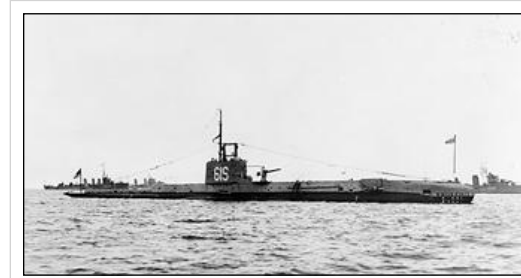
Captain: Langley, Michael Armitage  
 Complement: 39  
 Owner: British Royal Navy - Admiralty - RN, London  
 Builder: Chatham Dockyard (Royal Navy), London

### About the wreck

Status: Broken in two sections  
 Depth: 46 max. / 46 min. (m)  
 Orientation: 75°  
 More info: See more detailed info in the paragraph 'Hydrographic Report'

### Updates

Entered by: Jan Lettens, 01/07/2002  
 Last update:  
 Source: <https://www.wrecksite.eu/wreck.aspx?450>

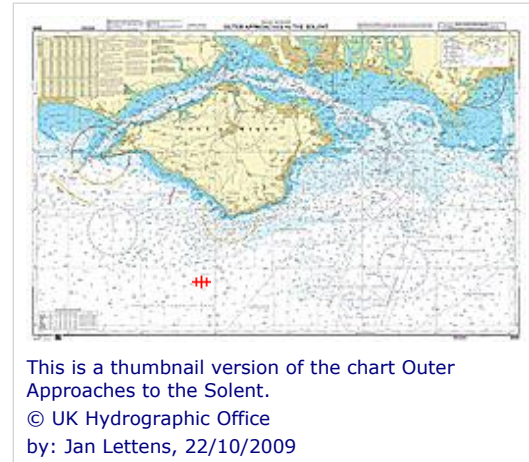


HMSM SWORDFISH at anchor at Weymouth.  
 © HM Royal Navy  
 by: Jan Lettens, 07/11/2010

## 2. Position

### Position [1]

Latitude: 50°28,783'N  
Longitude: 01°21,95'W  
System: ETRS89  
Reliability: Good 40m~100m  
Remarks: Method: Differential Global Positioning System Quality: Surveyed Accuracy: 13 m  
More info: See more detailed info in the paragraph 'Hydrographic Report'  
Last update: Jan Lettens, 03/11/2014  
References: UK Hydrographic Office



### Position [2]

Latitude: 50°24,536'N  
Longitude: 01°21,085'W  
System: WGS84  
Reliability: Bad >1km  
Remarks: Quality: Unreliable  
More info: See more detailed info in the paragraph 'Hydrographic Report'  
Last update: Jan Lettens, 01/10/2009  
References: UK Hydrographic Office

## 3. History

The British submarine *SWordfish* was lost while setting out on patrol. For some years her fate was unknown and it was assumed she had been lost somewhere in her patrol area. In 1983 the wreck was found off the Isle of Wight, southern England and it has now been established that she struck a mine.

Last update: Jan Lettens, 06/08/2007



by: Jan Lettens,  
06/08/2007

Believed sunk by mine

HMS *SWordfish* sailed from Portsmouth on 7th November 1940 for a patrol in the North Sea. Nothing was heard from the *SWordfish* after her departure despite efforts on the 15th and 16th to have her report her position. It was believed at the time that she had fallen victim to a German destroyer in the vicinity of Brest. This belief remained until 1983 when her wreck was discovered off the Isle of Wight at a depth of 150 feet. It is now clear that the submarine struck a mine shortly after sailing from Portsmouth.

Last update: Claes Johnny, 29/11/2007

**\*\*BUILT IN 1931 BY CHATHAM DOCKYARD. TWO OIL ENGINES OF 1550BHP, TWO ELECTRIC MOTORS OF 1300BHP. 6 TORPEDO TUBES, 1 X 3 INCH QF GUN, 1 LEWIS GUN. PASSAGE PORTMOUTH FOR USHANT TO RELIEVE HMS USK. NOT HEARD OF AGAIN AND PRESUMED TO HAVE BEEN MINED OFF USHANT OR SUNK BY ENEMY DESTROYERS. LOCATED IN 1983 BY M WOODWARD. BOAT IS IN TWO HALVES, BROKEN FWD OF THE GUN MOUNTING. FWD SECTION ON PORT SIDE, AFTER SECTION UPRIGHT. FWD PLANDS SET TO DIVE, BRIDGE TELEGRAPHS STILL AT SLOW AHEAD. AFTER ESCAPE HATCH OPEN. PROBABLY MINED WHILE CATCHING A TRIM PRIOR TO SURFACING FOR PASSAGE TO USHANT. CREW OF 40 ALL LOST. (W WOODWARD, COLLEGE & SIBI).**

Last update: Jan Lettens, 03/11/2014

References: UK Hydrographic Office



© Unknown  
by: Chipchase Nick,  
18/11/2014

---

**\*\*MINED. (STATED TO HAVE BEEN LOST OFF USHANT IN WW2SL).**

Last update: Jan Lettens, 01/10/2009

References: UK Hydrographic Office

## 4. The Wreck Today

HMS 'Swordfish' was located and identified by Martin Woodward in June 1983. The submarine was found by magnetometer, dived and positively identified as 'Swordfish' and reported to the authorities. It solved a long-standing mystery, as it was always thought that the submarine had been sunk by German destroyers some 250 miles away off Brest, but she had been sunk by German mine only a few hours after leaving Gosport. All the crew were tragically lost. The stern was found to be standing upright and the bow blown off forward of the conning tower.

As with HMS 'Acheron', Martin did not divulge the position, and left the Swordfish undisturbed as a War Grave. The wreck was found again almost 20 years later by hydrographic survey in the early 2000s and put on the chart, despite requests not to. Inevitably, the submarine has since suffered disturbance by souvenir hunting divers who did not respect the War Grave status.

Last update: Woodward Martin, 04/07/2020

---

**\*\*7.1.56 NSC IN 502830N, 012230W [OGB]. PERSISTENT ECHO, CONTACTED ON 119DEGS & 192DEGS. (HMS SCOTT, SURVEY 1955). \*\*HH090/962/01 13.12.02 EXAM'D 18.7.02 IN 5028.783N, 0121.950W [WGD] USING DGPS. SWEEP CLEAR 27.5, FOUL 27.7MTRS. LEAST E/S DEPTH 28.2 IN GEN DEPTH 36MTRS. NO SCOUR. LENGTH 64MTRS, WIDTH 15MTRS. DCS3 HT 9.9MTRS. LIES 075/255 DEGS. POOR MAGNETIC ANOMALY. APPEARS BROKEN TOWARDS ONE END. MAINLY UPRIGHT. (GARDLINE, HI 962). CINC REQUESTED BY M WOODWARD. INS AS SW 27.5MTRS. BR STD. \*\*9.4.17 STATUTORY INSTRUMENTS, DEFENCE NO 147/2017. COMING INTO FORCE 3.3.17. AMEND HISTORIC.**

Last update: Jan Lettens, 19/08/2019

---

**\*\*11.8.83 REPORTED TO HAVE BEEN LOCATED, AND POSITIVELY IDENTIFIED, OFF THE ISLE OF WIGHT. (BBC TV 10.8.83). POSN APPROX 10MILES S BY W FROM ST CATHERINE'S PT LT. (CDR COMPTON-HALL, TELECON 11.8.83). NCA YET.**

**\*\*H2555/74 19.8.83 WRITTEN TO M WOODWARD FOR DETAILS. WK LIES IN ABOUT 150FT OF WATER AND IS IN TWO PARTS. (DAILY TELEGRAPH 11.8.83).**

**\*\*H2555/74 6.9.83 POSN SUPPLIED BY CDR COMPTON-HALL IS NOT ACCURATE. WK IS NOT LOCATED IN SUBMARINE EXERCISE AREA. (M J WOODWARD, 29.8.83).**

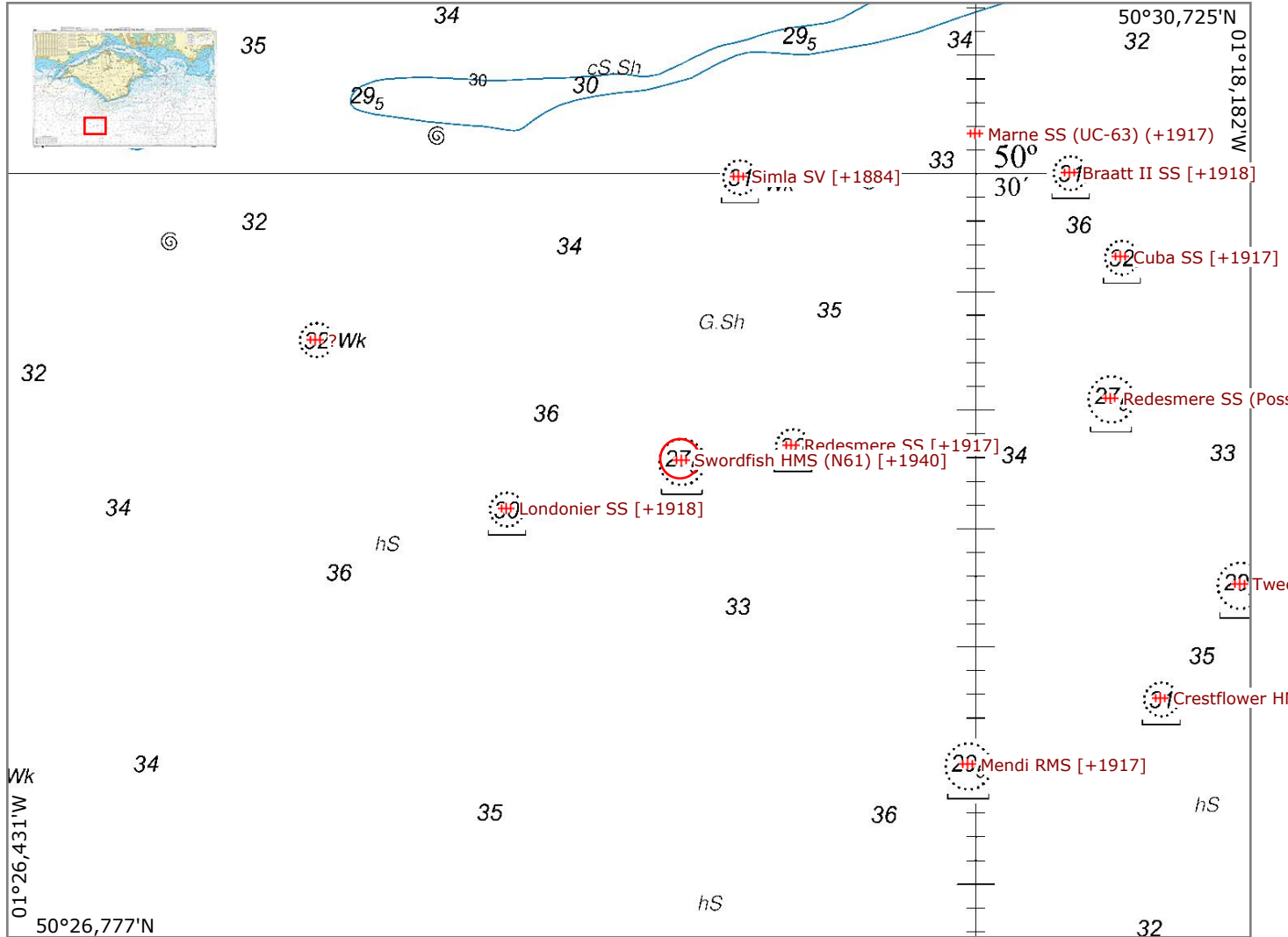
**\*\*HH100/351/04 21.6.91 WK LIES UPRIGHT IN 150FT OF WATER. BOW HAS BEEN BLOWN OFF. PHOTO OF DCS3 TRACE SUPPLIED. (M J WOODWARD, 10.6.91).**

**\*\*HH090/962/01 10.12.02 NOT LOCATED, DISPROVED. (GARDLINE, HI 962). AMENDED DEAD. NCA.**

Last update: Jan Lettens, 01/10/2009

# 5. Chart

## Outer Approaches to the Solent [BA2045]



This map has been derived in part from material obtained from the UK Hydrographic Office with the permission of the UK Hydrographic Office and Her Majesty's Stationery Office and custodian authorities © British Crown Copyright, 2022.

# 6. Hydrographic report

<b>State</b>	<b>LIVE</b>		
<b>Wreck Number</b>	18966 (UKHO ID)	<b>Classification</b>	Restricted Commercial
<b>Chart Symbol</b>	WK SW 27.5	<b>Status</b>	Historic
<b>Existence Doubtful</b>		<b>Reported Year</b>	
<b>Date Last Amended</b>	09/04/2017		
<b>Charting Comments</b>			
<b>Wreck Category</b>	Dangerous wreck		
<b>WGS84 Position</b>	<b>Latitude =</b> 50°28,783'N	<b>Longitude =</b> 01°21,95'W	
<b>WGS84 Origin</b>	Original		
<b>WGS84 limits</b>			
<b>Position</b>	<b>Latitude =</b> 50°28,783'N	<b>Longitude =</b> 01°21,95'W	
<b>Previous Position</b>	<b>Latitude =</b> 50°28,783'N	<b>Longitude =</b> 01°21,95'W	
<b>Position Accuracy</b>	13 m		
<b>Horizontal Datum</b>	ETRS 1989		
<b>Position Last Amended</b>	19/09/2013		
<b>Position</b>	<b>Position Method</b>	Differential Global Positioning System	<b>Position Quality</b> Surveyed
<b>Limits</b>			
<b>Depth</b>	<b>Depth</b>	27.5 m	<b>Water Depth</b> 36 m
	<b>Depth Method</b>	Swept by wire-drag	<b>Depth Quality</b> Least depth known
<b>Height</b>	<b>Height</b>		<b>Drying Height</b>
<b>Vertical Datum</b>	Approximate lowest astronomical tide		
<b>Wrecksite</b>	<b>Water Level Effect</b>	Always under water/submerged	<b>Bottom Texture</b> Sand
<b>Sonar Signal Strength</b>	Moderate		
<b>Sensor</b>	<b>Original Sensor</b>	Acoustic Sensor	<b>Last Sensor</b> Physical Snag
<b>Conspicuous</b>	<b>Conspic Visual</b>	NO	<b>Conspic Radar</b> NO
<b>Contact</b>	<b>Non-Sub Contact</b>		<b>Contact Description</b> Entire wreck
<b>Name</b>	<b>HMSM SWORDFISH</b>		
<b>Type</b>	SUBMARINE		
<b>Flag</b>	UNITED KINGDOM		
<b>Tonnage</b>	640 Displacement		
<b>Dimensions</b>	<b>L =</b> 57 m	<b>B =</b> 7.3 m	<b>D =</b> 3 m
<b>Date Sunk</b>	07/11/1940		
<b>Cargo</b>			
<b>Detection</b>	<b>Original Detection Year</b>	??/??/1955	<b>Last Detection Year</b> ??/??/2002
<b>Source</b>	<b>Original Source</b>	Naval Vessel	<b>Last Source</b> Survey Vessel
<b>Sonar Dimensions</b>	<b>L =</b> 64 m	<b>W =</b> 15 m	<b>H =</b> 9.9 m
<b>Orientation</b>	75°		
<b>Magnetic Anomaly</b>	Slight		
<b>Debris Field</b>	NIL		
<b>Scour</b>	<b>Scour Depth =</b> 0 m	<b>Scour Length =</b>	<b>Scour Orientation =</b>
<b>Markers</b>			
<b>General Comments</b>	UPRIGHT, BROKEN IN TWO FWD OF THE TOWER, ONE HATCH OPEN		
<b>Circumstances of Loss</b>	BUILT IN 1931 BY CHATHAM DOCKYARD. TWO OIL ENGINES OF 1550BHP, TWO ELECTRIC MOTORS OF 1300BHP. 6 TORPEDO TUBES, 1 X 3 INCH QF GUN, 1 LEWIS GUN. PASSAGE PORTMOUTH FOR USHANT TO RELIEVE HMS USK. NOT HEARD OF AGAIN AND PRESUMED TO HAVE BEEN MINED OFF USHANT OR SUNK BY ENEMY DESTROYERS. LOCATED IN 1983 BY M WOODWARD. BOAT IS IN TWO HALVES, BROKEN FWD OF THE GUN MOUNTING. FWD SECTION ON PORT SIDE, AFTER SECTION UPRIGHT. FWD PLANDS SET TO DIVE, BRIDGE TELEGRAPHS STILL AT SLOW AHEAD. AFTER ESCAPE HATCH OPEN. PROBABLY MINED WHILE CATCHING A TRIM PRIOR TO SURFACING FOR PASSAGE TO USHANT. CREW OF 40 ALL LOST. (W WOODWARD, COLLEGE & SIBI).		
<b>Surveying Details</b>	<p>** 7.1.56 NSC IN 502830N, 012230W [OGB]. PERSISTENT ECHO, CONTACTED ON 119DEGS &amp; 192DEGS. (HMS SCOTT, SURVEY 1955).</p> <p>** HH090/962/01 13.12.02 EXAM'D 18.7.02 IN 5028.783N, 0121.950W [WGD] USING DGPS. SWEEP CLEAR 27.5, FOUL 27.7MTRS. LEAST E/S DEPTH 28.2 IN GEN DEPTH 36MTRS. NO SCOUR. LENGTH 64MTRS, WIDTH 15MTRS. DCS3 HT 9.9MTRS. LIES 075/255 DEGS. POOR MAGNETIC ANOMALY. APPEARS BROKEN TOWARDS ONE END. MAINLY UPRIGHT. (GARDLINE, HI 962). CINC REQUESTED BY M WOODWARD. INS AS SW 27.5MTRS. BR STD.</p>		

**Copyrights:**

This report has been derived in part from material obtained from the UK Hydrographic Office with the permission of the UK Hydrographic Office and Her Majesty's Stationery Office and custodian authorities © British Crown Copyright, 2022.

## 7. Crew

APPS, DAVID (21), Able Seaman (no. C/JX 141903), HMS Swordfish, Royal Navy, †16/11/1940, Son of Arthur Maynard Apps and Rose Apps, of Palmers Green, Middlesex, Memorial: Chatham Naval Memorial

BLACKMORE, WILLIAM GEORGE (30), Able Seaman (no. D/SSX 17741), HMS Swordfish, Royal Navy, †16/11/1940, Son of William G. and Lillian Blackmore, of Cardiff; husband of Eunice Maud Blackmore, of Cardiff, Memorial: Plymouth Naval Memorial

BUSH, ROLAND WILLIAM (32), Oberfähnrich (no. C/J 109431), Mentioned in Despatches, HMS Swordfish, Royal Navy, †16/11/1940, Son of Jack and Florence Louisa Bush; husband of Nellie Bush, of Leeds, Memorial: Chatham Naval Memorial

BUTTRESS, HARRY (30), Leading Stoker (no. D/KX 81751), HMS Swordfish, Royal Navy, †16/11/1940, Son of Thomas Henry Buttress and of Emma Maria Buttress (nee Usherwood); husband of Isobel May Maynard Buttress, of Glasgow, Memorial: Plymouth Naval Memorial

COX, JAMES FRANK (40), Leading Seaman (no. P/J 60278), HMS Swordfish, Royal Navy, †16/11/1940, Son of Frank and Georgina Cox; husband of Annie Laura Louisa Cox, of Stapehill, Dorsetshire, Memorial: Portsmouth Naval Memorial

CREAN, WILLIAM JOHN (29), Leading Stoker (no. D/KX 82112), HMS Swordfish, Royal Navy, †17/11/1940, Son of John and Elizabeth Crean, of Griffithstown, Monmouthshire; husband of Mary Louisa Crean, of Griffithstown, Memorial: Plymouth Naval Memorial

DANDO, TREVOR JOHN BLADON (35), Petty Officer (no. C/J 105215), HMS Swordfish, Royal Navy, †16/11/1940, Son of Mr. and Mrs. Percy Dando; husband of Dorothy May Dando, of Purbrook, Hampshire, Memorial: Chatham Naval Memorial

DAVIES, HAROLD (30), Leading Signaller (no. P/JX 127080), Mentioned in Despatches, HMS Swordfish, Royal Navy, †16/11/1940, Son of William and Anne Davies; husband of Ethel Davies, of Sale, Cheshire, Memorial: Portsmouth Naval Memorial

FRY, ALEXANDER FREDERICK, Lieutenant, HMS Swordfish, Royal Naval Reserve, †16/11/1940, Memorial: Portsmouth Naval Memorial

GRATTON, FRANCIS ARTHUR JOHN (31), Able Seaman (no. D/JX 126186), HMS Swordfish, Royal Navy, †16/11/1940, Son of Jim and Annie Gratton; husband of Jessie Violet Gratton, of Milehouse, Plymouth, Memorial: Plymouth Naval Memorial

HOLLINGWORTH, ARTHUR CHARLES, Leading Seaman (no. D/JX 151882), HMS Swordfish, Royal Navy, †16/11/1940, Memorial: Plymouth Naval Memorial

JARRETT, THOMAS JOHN CHARLES (21), Stoker 1st Class (no. C/KX 92020), HMS Swordfish, Royal Navy, †16/11/1940, Son of Percy George and Rosina Jarrett, of Orpington, Kent, Memorial: Chatham Naval Memorial

JONES, EDWARD LEWINGDON, Able Seaman (no. P/JX 127991), HMS Swordfish, Royal Navy, †16/11/1940, Son of James Arthur and Agnes Jones; husband of Phyllis Jones, of Shipton Gorge, Dorsetshire, Memorial: Portsmouth Naval Memorial

KELLET, OSWALD (35), Petty Officer (no. D/J 98620), HMS Swordfish, Royal Navy, †16/11/1940, Son of Joseph and Margaret E. Kellet, of Rochdale, Lancashire, Memorial: Plymouth Naval Memorial

KENNARD, VICTOR ALBERT (36), Petty Officer Stoker (no. C/K 59839), HMS Swordfish, Royal Navy, †16/11/1940, Son of William Martin Kennard and Sarah Ann Kennard; husband of Dorothy May Kennard, of Weymouth, Dorsetshire, Memorial: Chatham Naval Memorial

LANGLEY, MICHAEL ARMITAGE (28), Lieutenant, D S C, HMS Swordfish, Royal Navy, †16/11/1940, Son of Cyril Owen Langley, D.L., and Mary Langley, of Brewood, Staffordshire, Memorial: Portsmouth Naval Memorial

LEE, WILLIAM THOMAS (29), Engine Room Artificer 2nd Class (no. D/MX 45635), Mentioned in Despatches, HMS Swordfish, Royal Navy, †16/11/1940, Son of Albert and Bessie Lee; husband of Queen Lee, of Copnor, Hampshire, Memorial: Plymouth Naval Memorial

LOINES, CHARLES WALTER LEONARD, Ordinary Seaman (no. C/JX 179106), HMS Swordfish, Royal Navy, †16/11/1940, Memorial: Chatham Naval Memorial

MCMANN, THOMAS, Leading Telegraphist (no. D/JX 134363), HMS Swordfish, Royal Navy, †16/11/1940, Memorial: Plymouth Naval Memorial

MILLERICK, FRANK FREDERICK (32), Stoker 1st Class (no. C/KX 79882), HMS Swordfish, Royal Navy, †16/11/1940, Son of Frank Frederick and Mary Elizabeth Millerick; husband of Agnes Elizabeth Millerick, of Hastings, Sussex, Memorial: Chatham Naval Memorial

MORRISON, CHARLES ARCHIBALD, Leading Stoker (no. C/KX 84966), HMS Swordfish, Royal Navy, †16/11/1940, Memorial: Chatham Naval Memorial

NICHOLS, RICHARD THOMAS (40), Able Seaman (no. P/J 58646), HMS Swordfish, Royal Navy, †16/11/1940, Son of John and Mary Anne Nichols; husband of Janet Mary Nichols, of Greenford, Middlesex, Memorial: Portsmouth Naval Memorial

NORTHWOOD, ARTHUR (24), Petty Officer Telegraphist (no. D/JX 135376), HMS Swordfish, Royal Navy, †16/11/1940, Memorial: Plymouth Naval Memorial

O'NEILL, JOSEPH PATRICK (29), Stoker 1st Class (no. D/KX 84929), HMS Swordfish, Royal Navy, †16/11/1940, Son of Phelix and Ellen O'Neill, of Lurgan, Co. Armagh, Northern Ireland, Memorial: Plymouth Naval Memorial

OWEN, AMOS JOHN, Engine Room Artificer 3rd Class (no. D/MX 52169), HMS Swordfish, Royal Navy, †16/11/1940, Memorial: Plymouth Naval Memorial

PLESTED, EDWARD, Stoker 1st Class (no. D/KX 86488), HMS Swordfish, Royal Navy, †16/11/1940, Son of Edward Plested, and of Elizabeth Plested, of Hulme, Manchester, Memorial: Plymouth Naval Memorial

PREDDY, LEONARD JOHN, Leading Stoker (no. D/KX 83716), HMS Swordfish, Royal Navy, †16/11/1940, Son of Ernest and Edith Preddy; husband of Phyllis Evangeline Preddy, of Lydbrook, Gloucestershire, Memorial: Plymouth Naval Memorial

RATCLIFFE, MICHAEL ERIC PRICE (22), Lieutenant, HMS Swordfish, Royal Navy, †16/11/1940, Son of Colonel William Claude Ratcliffe, D.S.O., and Dorothy Louise Ratcliffe, of Meole Brace, Shropshire, Memorial: Portsmouth Naval Memorial

SELWAY, HARRY THOMAS (31), Warrant Engineer, HMS Swordfish, Royal Navy, †16/11/1940, Memorial: Portsmouth Naval Memorial

SHIPLEY, JAMES HENRY NEWTON, Able Seaman (no. P/JX 145303), HMS Swordfish, Royal Navy, †16/11/1940, Memorial: Portsmouth Naval Memorial

SOURIS, EDWARD GEORGE, Stoker 1st Class (no. C/KX 83535), HMS Swordfish, Royal Navy, †16/11/1940, Memorial: Chatham Naval Memorial

SPROAT, DAVID JAMESON (24), Stoker 1st Class (no. C/KX 83324), HMS Swordfish, Royal Navy, †16/11/1940, Son of John and Elizabeth Sproat, of York, Memorial: Chatham Naval Memorial

SPURGEON, HAROLD VINCENT (28), Engine Room Artificer 2nd Class (no. D/MX 46961), HMS Swordfish, Royal Navy, †16/11/1940, Son of Ernest Herbert and Frances Maud Spurgeon; husband of Kathleen Maud Spurgeon, of Chatham, Memorial: Plymouth Naval Memorial

STACEY, HARRY ARTHUR (25), Lieutenant, HMS Swordfish, Royal Navy, †16/11/1940, Son of Maj. Gerald Stacey, D.S.O., Legion of Honour, and Annette Stacey; husband of Una Dorothy Anne Stacey (nee Naish). Awarded the Royal Humane Society's Bronze Medal, Memorial: Portsmouth Naval Memorial

STAPLEY, ERNEST WILLIAM (22), Engine Room Artificer 4th Class (no. P/MX 56585), HMS Swordfish, Royal Navy, †16/11/1940, Son of Ernest and Alice Lilian Stapley; husband of Dorothy Kathleen Stapley, of New Malden, Surrey, Memorial: Portsmouth Naval Memorial

TONKS, LEONARD, Leading Telegraphist (no. D/J 112969), HMS Swordfish, Royal Navy, †16/11/1940, Memorial: Plymouth Naval Memorial

WARD, FRED (34), Electrical Artificer 1st Class (no. C/MX 46205), Mentioned in Despatches, HMS Swordfish, Royal Navy, †16/11/1940, Son of Miles and Emily Ward; husband of Mary Esther May Ward, of Totton, Hampshire, Memorial: Chatham Naval Memorial

WILLIAMS, NORMAN CHARLES, Telegraphist (no. D/JX 142211), HMS Swordfish, Royal Navy, †16/11/1940, Memorial: Plymouth Naval Memorial

WILLIAMS, REGINALD HERBERT (25), Able Seaman (no. C/JX 148322), HMS Swordfish, Royal Navy, †16/11/1940, Son of Arthur and Florence Williams; husband of Edith W. F. Williams, of Canvey Island, Essex, Memorial: Chatham Naval Memorial

WOOD, JOHN HARDY, Telegraphist (no. D/JX 134058), HMS Swordfish, Royal Navy, †16/11/1940, Memorial: Plymouth Naval Memorial

YOUNG, JACK (21), Leading Seaman (no. C/JX 144322), HMS Swordfish, Royal Navy, †16/11/1940, Son of John William and Albertina Young, of Washington, Co. Durham, Memorial: Chatham Naval Memorial

## 8. About Owners - About Builders

### British Royal Navy - Admiralty - RN

In 1509 when Henry VIII was crowned he realised the growing navel power of King James IV of Scots. James had built an impressive fleet to control the Western Isles and was allied to France. Henry built up of his own fleet, the Navy Royal, as it was then known. New ships were constructed, the best known being the Mary Rose. Smaller types of warships (galleases) combining the best features of oars, sails and guns were also built. By Henry's death in 1547 his fleet had grown to 58 vessels.

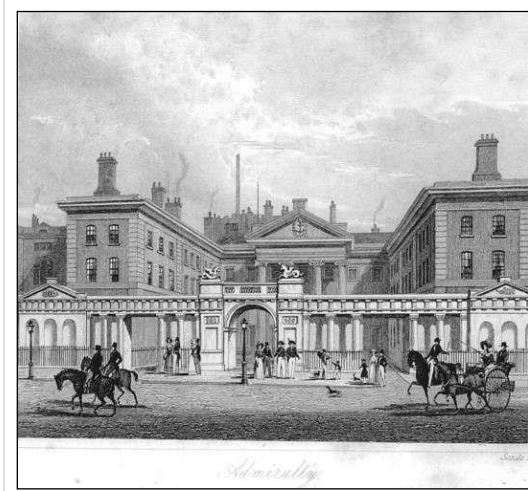
In 1546 a 'Council of the Marine' was established which later became the 'Navy Board'. The Navy Board was in charge of the daily administration of the navy until 1832 when it was combined with the Board of the Admiralty.

Elizabeth I inherited a fleet of only 27 ships in 1558. Instead of building up her own fleet Elizabeth encouraged private enterprise against Spain's new empire. Men like Sir John Hawkins and Sir Francis Drake to command groups of Royal and private ships to attack the Spanish. When Spain threatened invasion with its Armada in 1588 the Navy of England both Royal and private defended the realm. Early in the Seventeenth Century, larger galleons were built with heavier armaments. the largest English ship was Sovereign of the Seas built for prestige purposes by Charles I in 1637. The first ship with three gun decks to carry her 102 guns, she was the most powerful ship in the world for many years.

When King Charles II came to the throne in 1660 he inherited a huge fleet of 154 ships. This was a permanent professional national force and the beginning of the Royal Navy as we know it today.

Last update: Carl Racey †, 27/05/2014

References: [www.royalnavy.mod.uk](http://www.royalnavy.mod.uk)



The Admiralty was the authority responsible for the command of the Royal Navy in the Kingdom of England, and later in Great Britain and until 1964 in the United Kingdom.

© Unknown

by: Carl Racey †, 27/02/2015

## 9. Media

The pictures listed below can be found inside the img directory in the zip file

- pic1.jpg** HMSM SWORDFISH at anchor at Weymouth.  
Last update: Jan Lettens, 07/11/2010  
Copyrights: HM Royal Navy
- pic2.jpg** Last update: Jan Lettens, 06/08/2007
- pic3.jpg** Last update: Chipchase Nick, 18/11/2014  
Copyrights: Unknown
- pic4.jpg** HMS Swordfish  
WWII pennant for British S Class submarine  
Last update: Carl Racey †, 04/01/2010  
Copyrights: Unknown
- pic5.jpg** Last update: Jan Lettens, 06/08/2007
- pic6.tif** Outer Approaches to the Solent  
This is a thumbnail version of the chart Outer Approaches to the Solent.  
Last update: Jan Lettens, 22/10/2009  
Copyrights: UK Hydrographic Office
- pic7.jpg** The Admiralty  
The Admiralty was the authority responsible for the command of the Royal Navy in the Kingdom of England, and later in Great Britain and until 1964 in the United Kingdom.  
Last update: Carl Racey †, 27/02/2015  
Copyrights: Unknown
- pic8.jpg** British Admirals  
A famous and iconic symbol the 'British Admirals' - NELSON surrounded by HOWE, St VINCENT, DUNCAN & COLLINGWOOD. Engraved by Meyern and first published by Edward Baines in 1816. --- By definition King Charles II was the founder of the British Royal Navy in 1660. Much is owed down the years to many prominent figures in the development and success of the British Royal Navy.  
Last update: Carl Racey †, 03/03/2015

	Copyrights:	Unknown
<b>pic9.jpg</b>	Naval ensign of the united kingdom Last update:	Jan Lettens, 22/10/2009
<b>pic10.jpg</b>	Last update: Copyrights:	Chipchase Nick, 30/11/2013 Unknown
<b>pic11.jpg</b>	Royal Navy Losses 1914 - 1915 Last update: Copyrights:	Chipchase Nick, 04/06/2016 Unknown
<b>pic12.jpg</b>	Chatham 1858 Last update: References: Copyrights:	Chipchase Nick, 16/02/2010 The Illustrated London News Unknown
<b>pic13.jpg</b>	Chatham Dockyard Torpedo fitting shop. Last update: Copyrights:	Chipchase Nick, 25/09/2011 Unknown
<b>pic14.jpg</b>	Last update: Copyrights:	Chipchase Nick, 29/11/2015 Unknown
<b>pic15.jpg</b>	Chatham Dockyard Last update: Copyrights:	Chipchase Nick, 16/09/2019 Unknown
<b>pic16.jpg</b>	The Royal Dockyard at Chatham, 1789. Painting by Robert Dodd (1748-1815) Last update: References: Copyrights:	Sergio De Phocée, 06/08/2021 The British Library Dodd, Robert

The documents listed below can be found inside the doc directory in the zip file

<b>doc1.html</b>	Story of submarine Swordfish Last update: References:	Jan Lettens, 06/08/2007 www.wightindex.com
<b>doc2.jpg</b>	H.M.S. Swordfish Crew List... Taken from the Evening Telegraph, Wednesday 5th February 1941. Last update: Copyrights:	Black Jonathan, 22/02/2015 Unknown

## 10. References

### 10.1 BOOK, NEWSPAPER, MAGAZINE

#### 10.1.1 The Illustrated London News



### 10.2 AUTHOR, PERSON

#### 10.2.1 Dodd, Robert

### 10.3 COMPANY, MUSEUM, ORGANISATION, CLUB

#### 10.3.1 The British Library



### 10.3.2 Commonwealth War Graves Commission - Cwgc



### 10.3.3 UK Hydrographic Office

The UKHO provides nautical charts and navigational services of the world's oceans and ports to support world shipping, including the Royal Navy. Admiralty products and services have been developed over 200 years, and the UKHO uses the very latest techniques to continue to help protect lives at sea today.

### 10.4 WEBSITE

- 10.4.1 <https://www.wrecksite.eu/wreck.aspx?450> 
- 10.4.2 <http://www.royalnavy.mod.uk> 
- 10.4.3 <http://www.wightindex.com> 